

Obstacle light (Tower light)

ETL03-Uni-10
ETL03-Uni-32

Art.-Nr.: 400079
Art.-Nr.: 400108

ETL03-Uni-10-M Art.-Nr.: 400095
ETL03-Uni-32-M Art.-Nr.: 400112

Description:

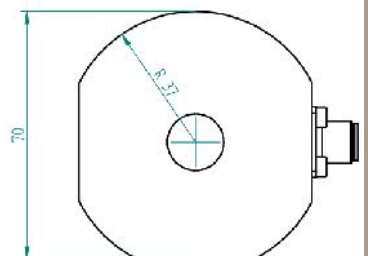
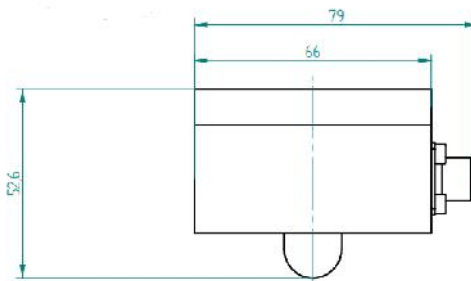
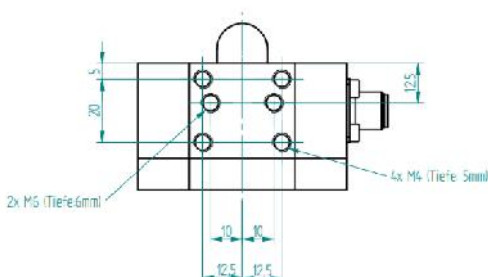
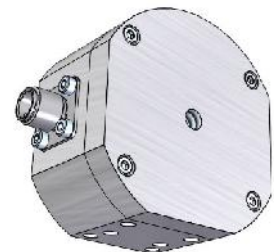
Obstacle light ETL03-Uni, developed for the marking of towers of wind turbines according to AVV Hindernis ES and ICAO low-intensity type A/B.

The procandela® „Hindernis-ES“ lights make the next step in very efficient and low-emission tower lighting! Small dimensions and variously mechanical mounting possibilities enable a customizable tower light solution.

Based on the latest LED technology and strictest material selection we can guarantee a very long operation life under harsh environmental conditions.

Technical Data:

- J Light intensity: 10 cd and 32cd, red (>180°)
- J Light source: High power LEDs
- J Power consumption: < 1 W and < 4 W
- J Housing: Aluminium seawater-proof, anodized
- J Protection class: IP66
- J Temperature range: -40 °C to +55 °C
- J Weight: 0,3 kg
- J Power supply: 24V DC
- J Fault monitoring: separate fault contact
- J Admission: AVV Hindernis ES and ICAO low-intensity A/B
- J Mechanical interface: Magnet, diverse screw connections available
- J Dimensions:



Accessories:

The tower lights will be standardly delivered without a connection cable. Optional it can be ordered a connection cable (4G0,5) in different lengths. The cable is equipped with a 4-pole industrial plug for the direct connection to the tower light.